

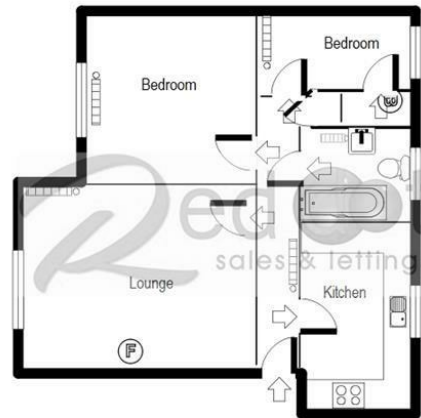


2 Bed  
Flat - Ground Floor  
located in Elworth

£775 Per Calendar Month



  
**Cheshire  
Property**  
Sales | Lettings



Whilst every attempt has been made to ensure the accuracy of the floor plan contained here, measurements of doors, windows, rooms and any other items are approximate and no responsibility is taken for any error, omission, or mis-statement and the floor plan is an illustration only as a guide.  
 This plan is for illustrative purposes only and should be used as such by any prospective purchaser or tenant.  
 The services, systems, appliances, shown have not been tested and no guarantee as to their operation or efficiency can be given.  
 Made with Visual Builder

## DIRECTIONS

## CONTACT

45 Mill Street  
 Congleton  
 Cheshire  
 CW12 1AG

E: [congleton@cheshire-property.com](mailto:congleton@cheshire-property.com)  
 T: 01260 290090

Energy Efficiency Rating		
	Current	Potential
Very energy efficient - lower running costs		
(92 plus) A		
(81-91) B		
(69-80) C	72	72
(55-68) D		
(39-54) E		
(21-38) F		
(1-20) G		
Not energy efficient - higher running costs		
England & Wales		
EU Directive 2002/91/EC		

